

QUIZ - COMPUTERS & INTERNET



Part one - multiple choice Five questions.

Read the question & choose the best answer - A,B,C,D

Put a tick in the circle. **A** Example

1 What does WWW mean?

- A** World Wise Web **B** World White Web
C World Wide Web **D** World With Web

2 What is a LAN?

- A** Local Area Network **B** Local Area Node
C Locked Area Network **D** Locked Area Node

3 Stores a web address so you can find it easily?

- A** Folder **B** Bookmark
C URL **D** Electronic mail

4 How do you use a hyperlink?

- A** Copy it **B** Click it
C Paste it **D** Drag it

5 What does ISP mean?

- A** Internet Service Provider **B** Internet Stack Provider
C Internet Sales Provider **D** International sales Provider



Part Two - Odd one out Five questions.

Read the question and tick the *odd one out*. Example:

Which is not part of a computer ?

Hard disk	<input type="radio"/>	Mother board	<input type="radio"/>
Floppy disk	<input type="radio"/>	Scanner	<input checked="" type="radio"/>

1 Which is not a software application?

A	Word	<input type="radio"/>	B	Modem	<input type="radio"/>
C	Excel	<input type="radio"/>	D	Paint Shop Pro	<input type="radio"/>

2 Which is the *odd one out*?

A	Serial port	<input type="radio"/>	B	Firewall	<input type="radio"/>
C	Firewire	<input type="radio"/>	D	USB	<input type="radio"/>

3 Which is not part of a network?

A	Router	<input type="radio"/>	B	Print server	<input type="radio"/>
C	NIC	<input type="radio"/>	D	Pancake	<input type="radio"/>

4 One does not store data?

A	Floppy disk	<input type="radio"/>	B	Memory card	<input type="radio"/>
C	UPS	<input type="radio"/>	D	Flash disk	<input type="radio"/>

5 Choose the *odd one out*?

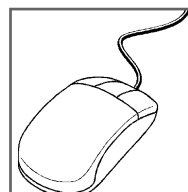
A	Printer	<input type="radio"/>	B	Keyboard	<input type="radio"/>
C	Joy stick	<input type="radio"/>	D	Mouse	<input type="radio"/>



Part Three multiple choice Eight questions.

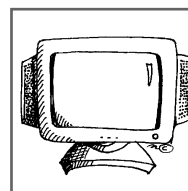
Look at the pictures & answer the questions.

1 What can you see in the picture?



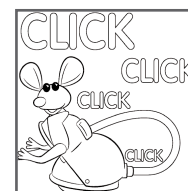
- A Mover B Mouse
C Pointer D Rat

2 What is this called?



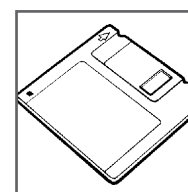
- A Monitor B Visual display undo
C Television D Scanner

3 How can you open a program?



- A Click an earcon B Click a squeeker
C Click a Jargon D Click an icon

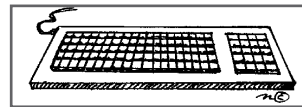
4 This is used for?



- A Storing bandwidth B Burnt by lazer
C Storing data D Storing light

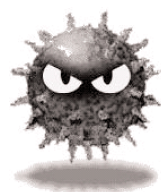


5 What is this used for?



- A Input
- B Output
- C Storage
- D Recovery

6 You can help protect a computer from a virus by?



- A Disinfectant
- B Fire wall
- C Fire curtain
- D Salvo

7 This is called a?



- A Cursor
- B Doodad
- C Pointer
- D Dooickey

8 Microsoft XP is?



- A A word processor
- B An operating system
- C Unix
- D Infuriating

Name: _____

Class: _____ Date: _____

Score: _____